



HATSAN
ARMS COMPANY

Serious. Solid. Impact.

ESCORT
BULLPUP PUMP-ACTION SHOTGUN



ESCORT BULLTAC

Instruction Manual



WARNING!
READ THIS ENTIRE MANUAL VERY
CAREFULLY BEFORE HANDLING OR
USING THIS FIREARM.

Read this manual before using your shotgun



ESCORT BULLTAC

Thank you for choosing the Hatsan Escort BullTac, a bullpup pump-action shotgun with a tube magazine. This manual covers the overall function of the firearm. There may be some slight visual differences between firearms, they do not affect the operation of the firearm described in this manual. For more information on technical changes, developments, and use of accessories included with your firearm, please visit our web page at www.hatsan.com.tr or www.hatsanusa.com



WARNING!

Read the instructions and warnings in the entire manual very carefully **BEFORE** handling this firearm. Incorrect handling may result in serious injury or death. Always keep this manual with your firearm. Make sure you understand all operational instructions, safety procedures, and warnings in this manual before you handle this firearm. If you sell, lend, or give your firearm to someone, make sure this manual goes with it.



WARNING!

Always keep your fingers off the trigger and make sure the safety is fully engaged until you are ready to fire. To fully engage the safety, press the safety button from the right side until it stops. When you do that, you will **NOT** see the red color on the safety button's right side.



WARNING!

THIS PRODUCT CAN EXPOSE YOU TO CHEMICALS INCLUDING LEAD, WHICH ARE KNOWN TO THE STATE OF CALIFORNIA TO CAUSE CANCER AND BIRTH DEFECTS OR OTHER REPRODUCTIVE HARM. FOR MORE INFORMATION GO TO WWW.P65WARNINGS.CA.GOV.



SAFETY MEASURES



- Always point the muzzle of your firearm in a safe direction, regardless of whether the firearm is loaded or unloaded. Never point your firearm at anything you do not intend to shoot. Be serious and in control of your firearm at all times.
- Keep your fingers off and away from the trigger when operating any other part of the firearm's mechanisms.
- Keep the safety in the "ON" position until you are actually ready to fire.
- Keep your fingers away from the muzzle. Never pull a firearm towards you by the muzzle.
- Make sure the barrel is clear of obstructions, dust, and moisture.
- Always keep your firearm unloaded when not in use.
- Always know your target and what is behind it. Never shoot at sounds. To avoid ricochets, do not shoot at a flat or hard surface or at water.
- Store firearms and ammunition separately, out of reach of children, preferably in a locked safe. Always store firearms unloaded.
- Never leave loaded firearms in your vehicle, home, or camp.
- Never climb fences, trees, or jump in/over a ditch with a loaded firearm, even if its safety is "ON".
- Never rely on anyone's word that a firearm is unloaded or has the safety "ON". Always visually inspect the firearm to be sure it is unloaded. Do this every time you handle any firearm.
- Avoid alcohol before and during shooting.
- Always use proper eye and hearing protection when shooting. Shooting without proper protection can cause hearing damage and/or vision damage.
- Always wash your hands after handling a firearm or ammunition. Even if the firearm does not contain lead, it fires ammunition containing lead or lead containing compounds which are known to be dangerous to your health.
- Proper air ventilation is absolutely necessary when shooting indoors.
- Any damage, malfunction, injury, or death resulting from the use of faulty, incorrect, non-standard, remanufactured, hand loaded or reloaded ammunition is the sole responsibility of the user.
- The user is solely responsible for the damages, injuries, or death resulting from carelessness or misuse of the firearm.



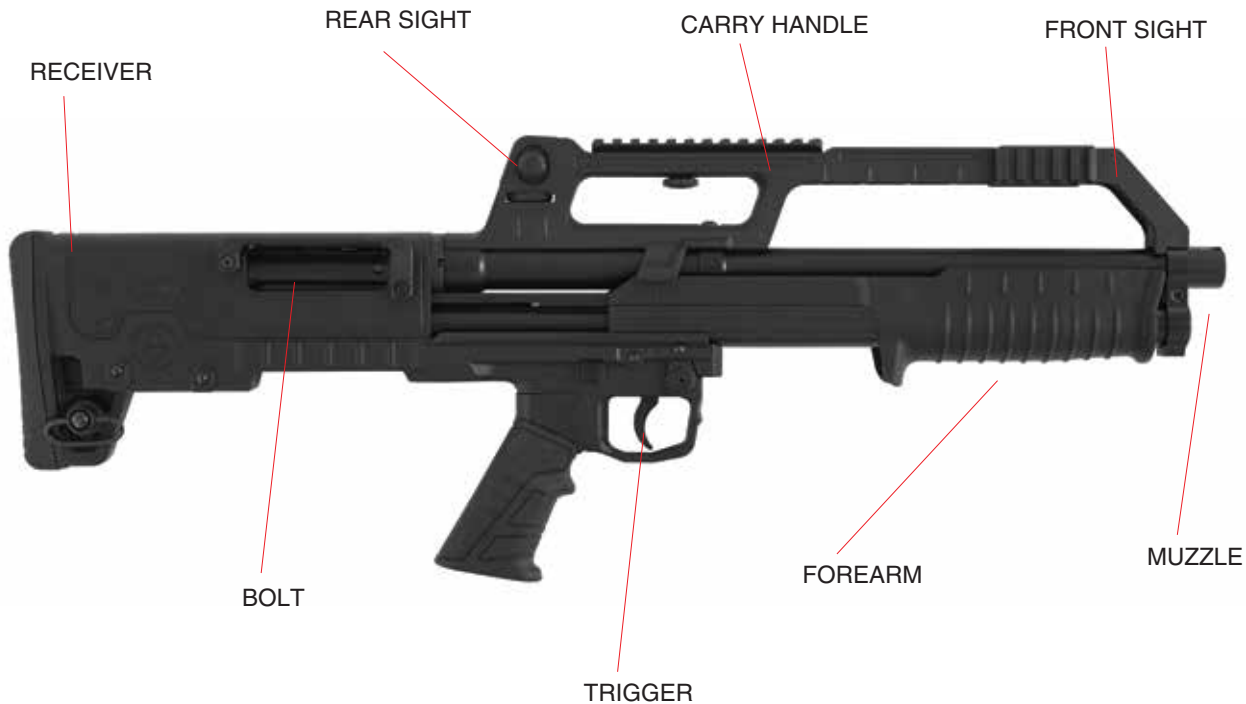


SAFETY MEASURES.....	3
MODEL FEATURES.....	6
PARTS LIST.....	8
EXPLODED VIEW.....	10
TECHNICAL FEATURES AND DATA.....	12
EXTERNAL CONTROL PARTS.....	12
LOADING THE SHOTGUN.....	14
FIRING THE FIREARM.....	15
UNLOADING THE FIREARM.....	17
DISASSEMBLY INSTRUCTIONS.....	18
CLEANING AND MAINTENANCE.....	20



ESCORT BULLTAC

GET TO KNOW OUR SHOTGUN



GET TO KNOW OUR SHOTGUN



Fiber Optic Front Sight



Elevation Adjustable Rear Sight



Shell Deflector



Picatinny Rail





ESCORT BULLTAC

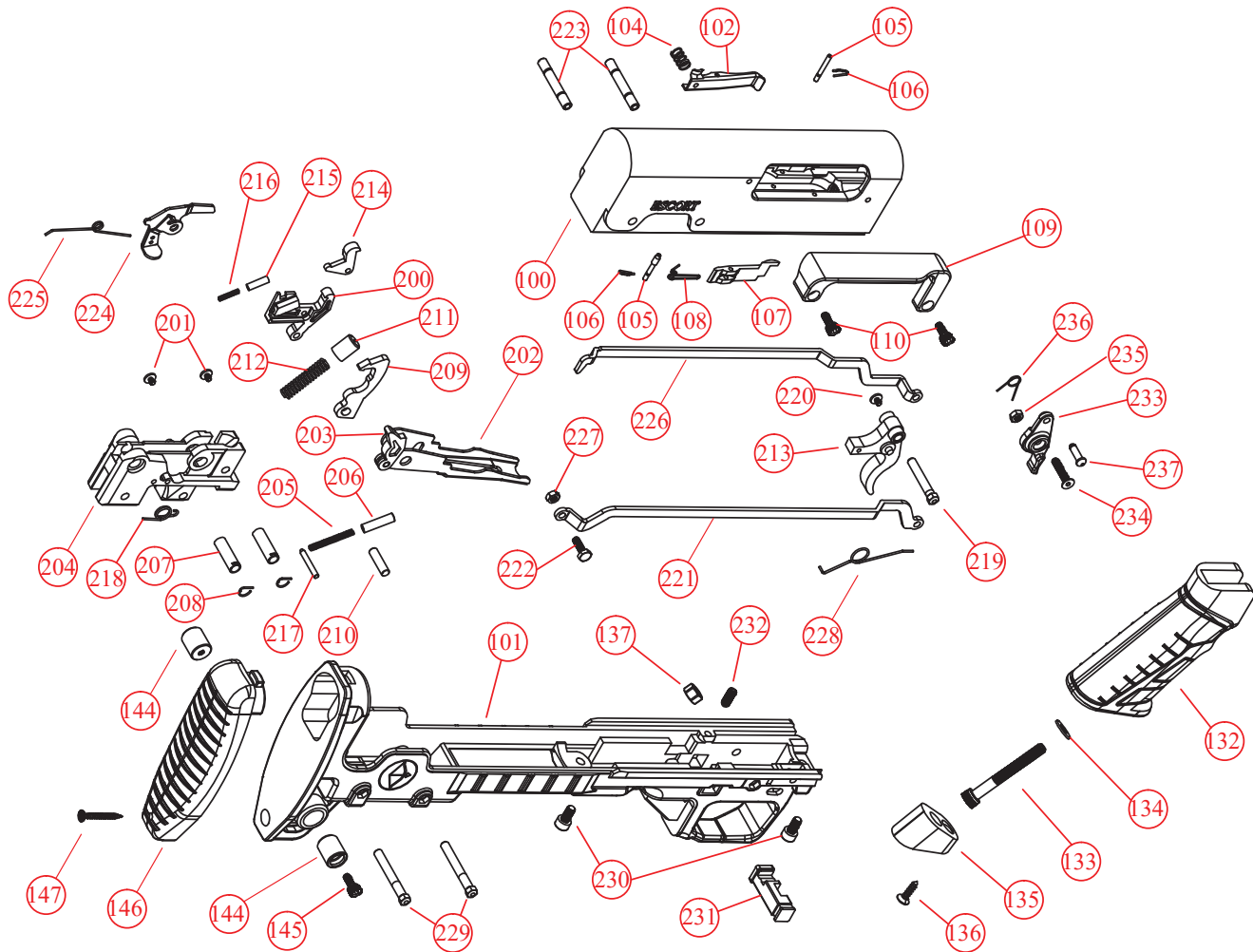
PARTS LIST

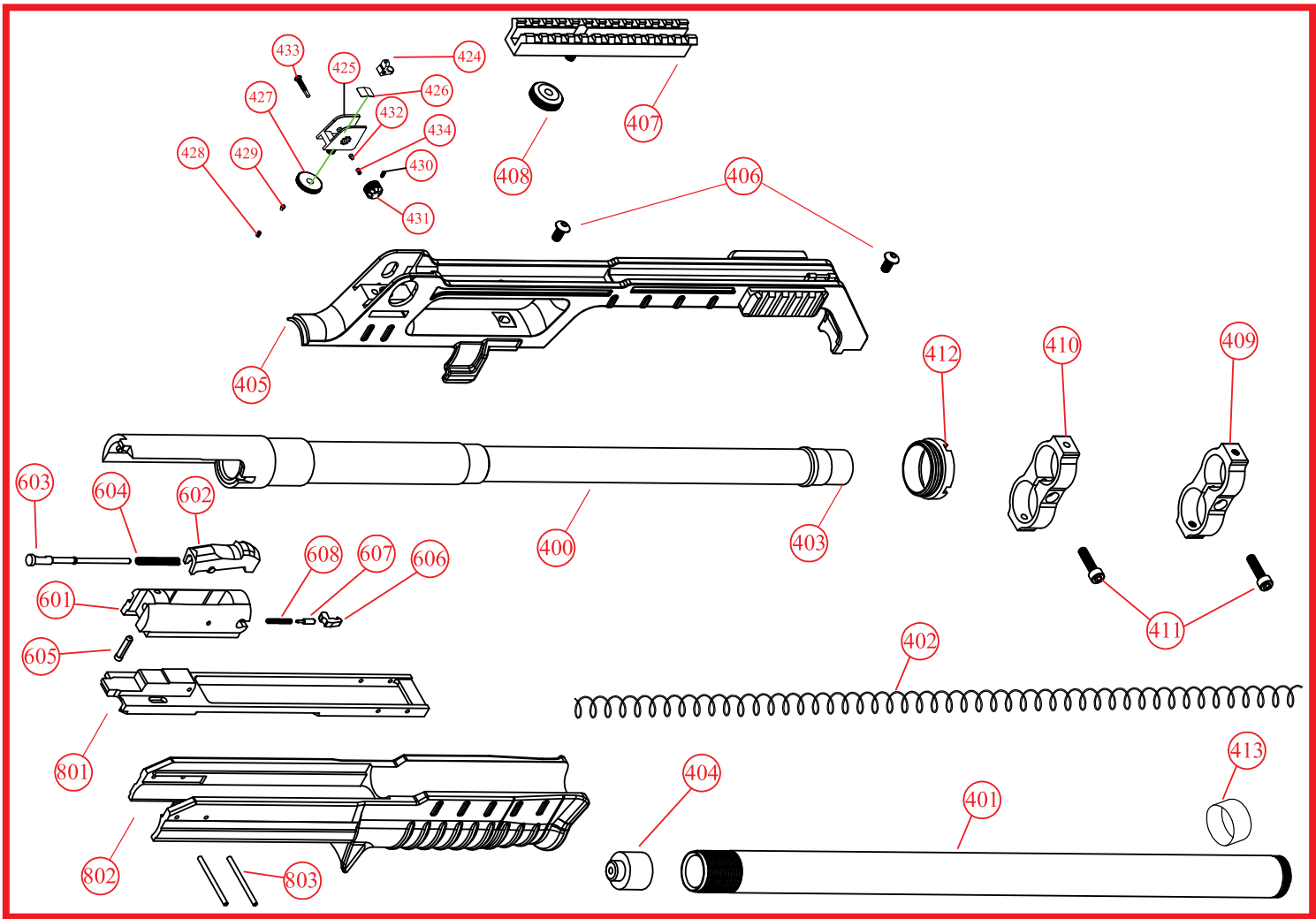
CODE	PART NAME	CODE	PART NAME
100	RECEIVER	203	CARRIER LEVEL
101	BULLPUP STOCK	204	TRIGGER PLATE
102	CARRIER LATCH	205	CARRIER SPRING
104	CARRIER LATCH SPRING	206	CARRIER SPRING GUIDE
105	CARRIER LATCH PIN	207	CARRIER PIN
106	SHELL LATCH RETAINING PLUG	208	CARRIER PIN RETAINING PLUG
107	SHELL LATCH	209	HAMMER
108	SHELL LATCH SPRING	210	HAMMER PIN
109	SHELL DEFLECTOR	211	HAMMER SPRING GUIDE
110	SHELL DEFLECTOR SCREW	212	HAMMER SPRING
132	PISTOL GRIP	213	TRIGGER
133	PISTOL GRIP SCREW	214	SEAR
134	PISTOL GRIP SCREW WASHER	215	SEAR SPRING GUIDE
135	PISTOL GRIP CAP	216	SEAR SPRING
136	PISTOL GRIP CAP SCREW	217	SEAR PIN
137	PISTOL GRIP NUT	218	INNER TRIGGER SPRING
144	SWIVEL SLOT	219	TRIGGER PIN
145	SWIVEL SLOT SCREW	220	TRIGGER PIN RETAINING SCREW
146	BUTT PAD	221	TRIGGER CONNECTION ROD
147	BUTT PAD SCREW	222	INNER TRIGGER SCREW
200	INNER TRIGGER	223	RECEIVER PIN
201	TRIGGER PIN SCREW	224	ACTION RELEASE CONTROL
202	CARRIER	225	ACTION RELEASE CONTROL SPRING

PARTS LIST CONTINUED



CODE	PART NAME	CODE	PART NAME
226	ACTION RELEASE CONTROL ROD	412	BARREL NUT
227	INNER TRIGGER SCREW NUT	413	MAGAZINE SPRING RETAINING PLUG
228	TRIGGER SPRING	424	REAR SIGHT
229	TRIGGER BODY PIN	425	REAR SIGHT BODY
230	STOCK CONNECTING SCREW	426	REAR SIGHT SPRING WASHER
231	SAFETY	427	REAR SIGHT ELEVATION ADJUSTMENT NUT
232	SAFETY SCREW	428	REAR SIGHT ELEVATION ADJUSTMENT NUT SPRING
233	ACTION RELEASE CONTROL BUTTON	429	REAR SIGHT ELEVATION ADJUSTMENT NUT PIN
234	ACTION RELEASE CONTROL BUTTON SCREW	430	REAR SIGHT ELEVATION ADJUSTMENT NUT SCREW
235	ACTION RELEASE CONTROL BUTTON SCREW NUT	431	REAR SIGHT WINDAGE ADJUSTMENT
236	ACTION RELEASE CONTROL BUTTON SPRING	432	REAR SIGHT WINDAGE ADJUSTMENT PIN
237	ACTION RELEASE CONTROL BUTTON PIN	433	REAR SIGHT WINDAGE ADJUSTMENT SCREW
400	BARREL	434	REAR SIGHT WINDAGE ADJUSTMENT NUT SPRING
401	MAGAZINE TUBE	601	BOLT
402	MAGAZINE SPRING	602	LOCKING BLOCK
403	MUZZLE CAP	603	FIRING PIN
404	MAGAZINE SPRING FOLLOWER	604	FIRING PIN SPRING
405	CARRY HANDLE	605	FIRING PIN STOP PIN
406	CARRY HANDLE SCREW	606	EXTRACTOR
407	PICATINNY RAIL	607	EXTRACTOR PIN
408	PICATINNY RAIL NUT	608	EXTRACTOR PIN SPRING
409	BARREL-MAGAZINE TUBE CONNECTING BUSH	801	ACTION BAR
410	BARREL-STOCK CONNECTING BUSH	802	FOREND
411	CONNECTING BUSH SCREW	803	ACTION BAR PIN







ESCORT BULLTAC

TECHNICAL FEATURES AND DATA

Record your firearm's details below.

Model	Serial Number	Barrel Length	Chamber	Caliber	Type
					Pump-Action Shotgun with Tube Magazine

EXTERNAL CONTROL PARTS

("Left" and "Right" refers to the left and the right sides of the shotgun seen by a shooter while holding it in the firing position. Rear refers to the stock and front refers to the muzzle side of the shotgun)



SAFETY BUTTON:

- It is located at the rear of the trigger on the trigger housing.
- The safety button is disengaged if it is on the right side in full and locked in place. In this position you must see the red color on the safety button's right side. This means the safety is "OFF" and the shotgun is ready to fire.
- To engage the safety button, push the button from the right to the left until it stops & locks in place. In this position you must not see any of the red color on the safety button's right side. The safety is now "ON", blocking the trigger from being pulled.

WARNING!

- Always keep the cross-button safety in the "ON" position until you are ready to fire, and the muzzle is pointing at the intended target.
- Make sure that you understand how all external control parts work before you attempt to load the firearm.
- Always keep the muzzle pointed in a safe direction and keep your finger off the trigger when operating the safety. Malfunctions, which may cause a shotgun to fire whether the safety is "ON" or "OFF", are rare but can happen.

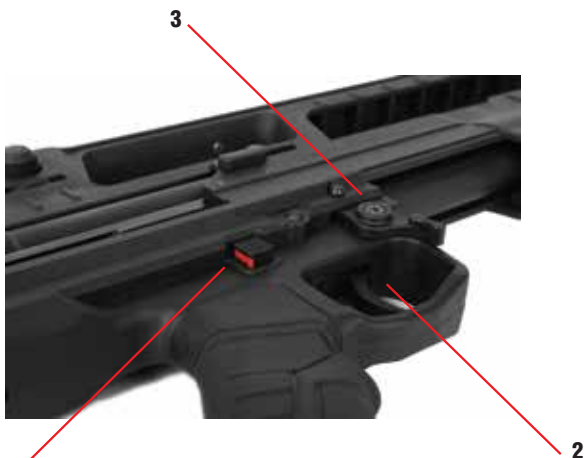




THREE THINGS TO REMEMBER ABOUT A SAFETY:



- 1. NEVER TOTALLY DEPEND ON A MECHANICAL SAFETY.** Like all mechanical devices the safety is subject to breakage or malfunction and can fail due to wear, abuse, dirt, corrosion, incorrect assembly of the firearm, improper adjustment or repair, or lack of maintenance.
- 2. NO MECHANICAL SAFETY IS “CHILDPROOF” OR “FAIL SAFE”.** Never rely on just a safety to prevent an accidental shooting by a child or a careless adult.
- 3. TREAT EVERY FIREARM AS IF YOU EXPECT ITS MECHANICAL SAFETY NOT TO WORK.**



- 1. Safety Button:** It is located at the rear of the trigger on the trigger housing. You can see the safety button's position on both sides.
- 2. Trigger:** It is located within the lower receiver. If the safety is OFF and there is a shotshell in the chamber, pulling the trigger will cause the shotgun to fire.
- 3. Action Release Control:** The action lock lever is located on the right side of the lower receiver. The action lock lever allows the action to be unlocked and opened for inspection or unloading without pulling the trigger. The action may be opened by depressing the lever and pulling the forearm rearward.



The safety should remain in the “ON”(SAFE) position and the firearm unloaded at all times until you are in a place where it is safe to shoot. Keep your finger off the trigger and outside of the trigger guard until you are aiming at the intended target and have decided to fire.



ESCORT BULLTAC

LOADING THE SHOTGUN

Load the shotgun as follows:

- Put the safety in the “ON” position if it is disengaged. (1)
- With the firearm pointed in a safe direction, insert the rounds through the magazine tube from the bottom of the shotgun. (2)
- Be sure to insert the shell into the magazine tube in the correct direction, as shown in the image above. (2)



WARNING! Shotgun is now loaded and ready to be fired.

Before using your shotgun, carefully check and read the “**Model Features**” and “**Safety Measures**” sections.



WARNING!

- **Barrel bore and chamber must be clean and there should be no obstructions in them.**
- **Look through the chamber and make sure it is empty.**
- **Always keep your fingers away from the trigger if you do not intend to fire.**
- **Always check cartridge chamber and receiver to see that the shotgun is not already loaded.**
- **While you load the shotgun, always point the barrel in a safe direction.**
- **Always use the correct ammunition size for which your shotgun is chambered.**
- **Always keep the safety “ON” while loading your shotgun.**

FIRING THE SHOTGUN



WARNING!

Keep the safety in the “ON” position and your finger outside the trigger guard until you are actually ready to fire and aimed at your intended target. You need to pump the shotgun each time you fire to feed the next round from the magazine tube to the chamber. The bolt will remain open (locked at the rear) after the last cartridge is fired, but never rely on this. Always visually check to verify that no cartridge is left in the chamber and magazine tube.

Fire your shotgun as follows:

- Engage the safety and load your shotgun. (see Loading section)
- For shooting, pull the forearm full backwards by pressing the action release control lever (1) and push forward to load the cartridge into cartridge chamber (2).
- Wear eye and ear protection and safely aim at your intended target. Be sure you know what is beyond your target as well.
- Disengage the safety and get ready to shoot.
- Pull the trigger and the shotgun will fire.
- To fire the next round, pump the shotgun by grasping the forearm and pulling it fully backwards, so the next round is fed to the cartridge chamber. Then push the forearm full forward and you can fire again.





The safety should remain in the “ON”(SAFE) position and the firearm unloaded at all times until you are in a place where it is safe to shoot. Keeping your finger off the trigger and outside of the trigger guard until you are aiming at the intended target and have decided to fire.



Be sure that all observers are clear of the path of ejection. Empty cases are thrown out with significant force and could cause injury.



Wear eye and hearing protection specified for use with a firearm when firing and clearing misfires or jams.



Should any shotshell fail to fire, keep the muzzle pointed in a safe direction for at least thirty (30) seconds in-case the shotshell is a “hang fire” (delayed firing of the shotshell after being stuck by the firing pin.) Push the safety button to the “ON” position. Pull the forearm full rearward to that the action is in the open position extracting and ejecting the misfired shotshell. Segregate the misfired shotshell from other ammunition. Do not attempt to refire a misfired shotshell.



If your firearm gives any indication that it is not performing properly or the operation of your firearm has changed “The way it feels or sounds”, stop firing. Make sure the firearm is pointed in a safe direction, push the safety button to the “ON” position, unload the firearm and have it inspected by a gunsmith.



Always wash your hands after handling a firearm or ammunition. Even if the firearm does not contain lead, it fires ammunition containing lead or lead containing compounds which are known to be dangerous to your health. Proper air ventilation is absolutely necessary when shooting indoors.

UNLOADING THE SHOTGUN



WARNING!

Put the safety in the “ON” position, keep your finger outside the trigger guard, and keep the muzzle pointed in a safe direction while unloading the firearm. If the safety is “OFF” and you pull the trigger, you will fire the gun.

Unload your shotgun as follows:

- Point the shotgun in a safe direction and engage the safety to the “ON” position.
- Turn the shotgun upside down so that the trigger is facing you. As displayed in figure (1).
- Pull the forearm fully backwards by pressing the action release control lever. (2)
- You must see the cartridge in receiver. (2)
- Take the cartridge from the receiver with your fingers. (3)
- Repeat this procedure until no more cartridges are ejected from the magazine tube.
- When no more cartridges are ejected from the magazine tube, visually check to assure the magazine tube and receiver are empty, and pull the forearm rearward enough to see and make sure that the cartridge chamber is empty.



(1)



(2)



(3)

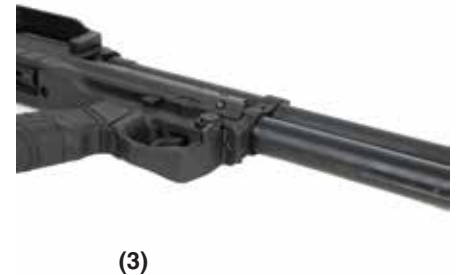
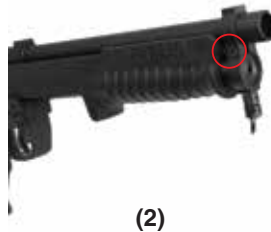
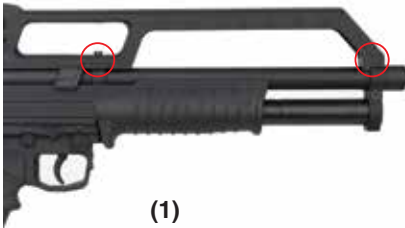


WARNING!

Make sure the firearm is completely clear (empty) and the safety is in the “ON” position before you start disassembling the firearm. If you wish to disassemble the firearm right after shooting, be careful as the barrel may be hot. Do not start the assembly or disassembly if the barrel is hot. Let it cool before you touch the barrel or start the disassembly process.

Disassembly:

- Remove the screws on the carry handle. (1)
- Then disassemble the carry handle. (1)
- Remove the muzzle cap, then the screws on the front connecting bush. Then disassemble the bush. (2)
- Disassemble the forend pins and pull out the pump-action forend. (3)



DISASSEMBLY CONTINUED

Disassembly Continued:

- Remove the screws on the rear connecting bush. Then disassemble the bush. (4)
- Unscrew (counter clockwise) the barrel counter nut. Then disassemble the barrel. (5)
- Pull out the action bar. (6)
- Disassemble the bolt from the action bar. (7)
- Clean the action bar and bolt. (8)
- Clean the inside of the barrel with a cleaning rod. (9)



(4)



(5)



(6)



(7)



(8)



(9)



WARNING!

Before cleaning or lubricating the firearm, make sure it is unloaded and the safety is in the “ON” position. It is recommended to disassemble the firearm to clean and lubricate it when grease, dirt particles, and/or combustion residue accumulates. To have the best resistance against corrosion, it is necessary to clean and lubricate the firearm after each use, especially after use in wet and/or saline environments.

Materials and Equipment Necessary for Cleaning & Lubrication:

- Cleaning rod
- Cotton bore patches
- Small soft brush
- Powder solvent
- Good quality gun oil

Cleaning Your Firearm:

- After use, to remove any powder and lead residue in the bore, scrub the barrel and chamber using the bore brush with powder solvent. Then be sure to swab the bore and chamber with oiled cotton patches to protect from rust and corrosion.
- Do general maintenance after each use.
- At the end of the hunting season or after 100 shots, disassemble the parts explained in the DISASSEMBLY section and clean it with a soft brush and gun oil. Dry carefully with a soft cloth and oil the parts lightly.
- After you remove the bolt group and the action bar, clean with a soft brush and gun oil.
- Clean the outer surface of the firearm with oiled cotton patches. Dry carefully with a soft cloth and oil the parts lightly.
- Any powder on the firing wall, barrel, etc. can be cleaned with a brush and powder solvent.
- All external surfaces should be wiped down with a light coat of rust preventative.



Serious. Solid. Impact.

HATSAN
ARMS COMPANY



facebook.com/hatsan



twitter.com/hatsan_arms



youtube.com/hatsanarms



instagram.com/hatsanarms



facebook.com/HatsanUSA
facebook.com/escortshotguns



twitter.com/HatsanUSA
twitter.com/escortshotguns



youtube.com/hatsanusainc
youtube.com/@escortshotguns6737



instagram.com/hatsan_usa
instagram.com/escortshotguns

