



Serious. Solid. Impact.

HATSAN
ARMS COMPANY

ESCORT
Semi Automatic Shotgun



ESCORT

DYNAMAX

Instruction Manual

Read this manual before using your shotgun.

CONTENTS	Page
SAFETY MEASURES_____	3
NOMENCLATURE_____	4
PARTS' LIST _____	5
EXPLODED VIEW _____	6-7
TECHNICAL FEATURES AND DATA _____	8
EXTERNAL CONTROL PARTS _____	8
ASSEMBLY INSTRUCTIONS _____	9
LOADING _____	10
FIRING _____	11
USE OF CHOKES _____	12
UNLOADING_____	13
DISASSEMBLY INSTRUCTIONS_____	13
CARE, CLEANING AND LUBRICATION _____	14
ILLUSTRATIONS _____	15-16-17

Congratulations and Thank you on the purchase of Hatsan Escort Dynamax inertia & gas-driven semi-automatic shotgun. For more information regarding the use of accessories packed with your shotgun please visit our web page www.hatsan.com.tr

WARNING!

Please read the entire manual very carefully before handling your new shotgun. Careless or abusive handling of any firearm may cause an unintended personal injury or death.

This manual should always accompany your shotgun. Before handling, make sure you understand all the operational instructions, safety procedures and warnings in this manual.

If you sell, lend or give your shotgun to someone else, make sure this manual goes with it.

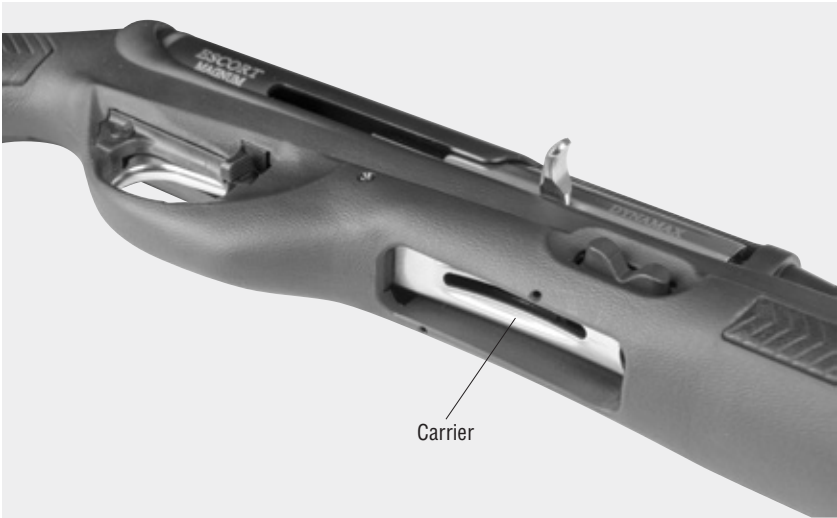
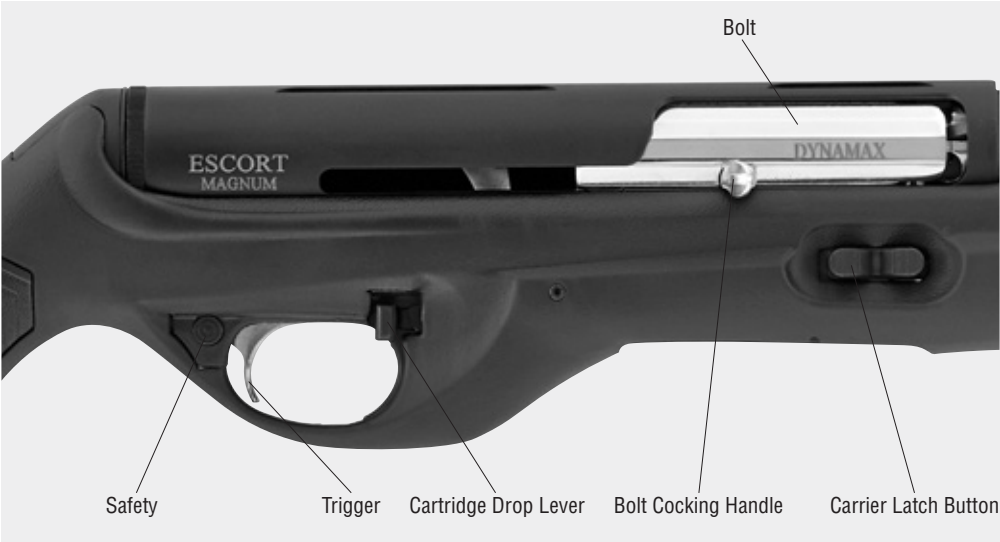
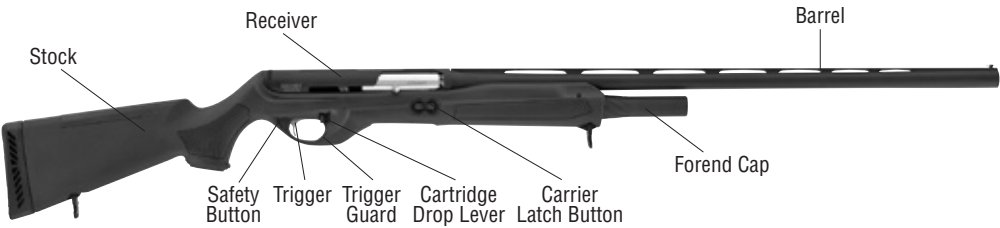
WARNING!

Always keep your fingers outside the trigger guard and make sure the safety is fully engaged until you are ready to fire. The safety is fully engaged only when the safety button is pushed fully toward the ON position and its red ring is completely covered.

SAFETY MEASURES:

- Always point the muzzle of your shotgun in a safe direction, even if your shotgun is unloaded. Never point your shotgun at anything you don't intend to shoot. Avoid all horseplay while handling a shotgun.
- Never touch the trigger when operating any part of the shotgun's mechanism.
- Keep the safety "ON" until you are ready to fire. Treat every shotgun with respect and caution.
- Keep your fingers away from the muzzle. Never pull a shotgun towards you by muzzle.
- Make sure the barrel is clear of obstructions, dust and moisture.
- Always keep your shotgun unloaded when not in use. Never load your shotgun if you have no intention to shoot.
- Always aim at a safe target, taking care that nothing is hidden behind it. Never shoot at sounds. To avoid ricochets, do not shoot at any flat or hard surface or at water.
- Store your shotgun and ammunition separately, well beyond the reach of children, better if under lock and key. All firearms should be stored unloaded.
- Never have loaded firearms in your vehicle, home or camp, many people have been injured or killed in these situations due to this rule being broken.
- Make sure to keep your shotgun unloaded and the safety engaged during transport. Do not climb fences, trees or jump in a ditch with a loaded shotgun even if it's on Safe mode. Each year there are shooters who are shot due to the carelessness, usually by their own firearm. Always unload your shotgun when climbing, running or jumping.
- Never rely on any one's words that the shotgun is "on safe" or unloaded. To be certain, always visually check the safety of your shotgun and make sure it's unloaded when getting it from storage or someone else.
- Shoot SOBER. Avoid all kind of alcoholic beverages or drugs before or during shooting.
- Always wear eye & hearing protection when shooting and make sure your bystanders are similarly protected.
- Although the shotgun itself does not contain lead, it fires ammunition containing lead or lead containing compounds which are known to be dangerous for health. When shooting or cleaning shotguns, take protective health measures. Avoid exposure to lead while handling and wash your hands after contact.
- Proper air ventilation is absolutely necessary when shooting indoors.
- Any damage, malfunction, injury, or death resulting from the use of faulty, incorrect, non-standard, remanufactured, hand loaded or reloaded ammunition is the sole responsibility of the user.

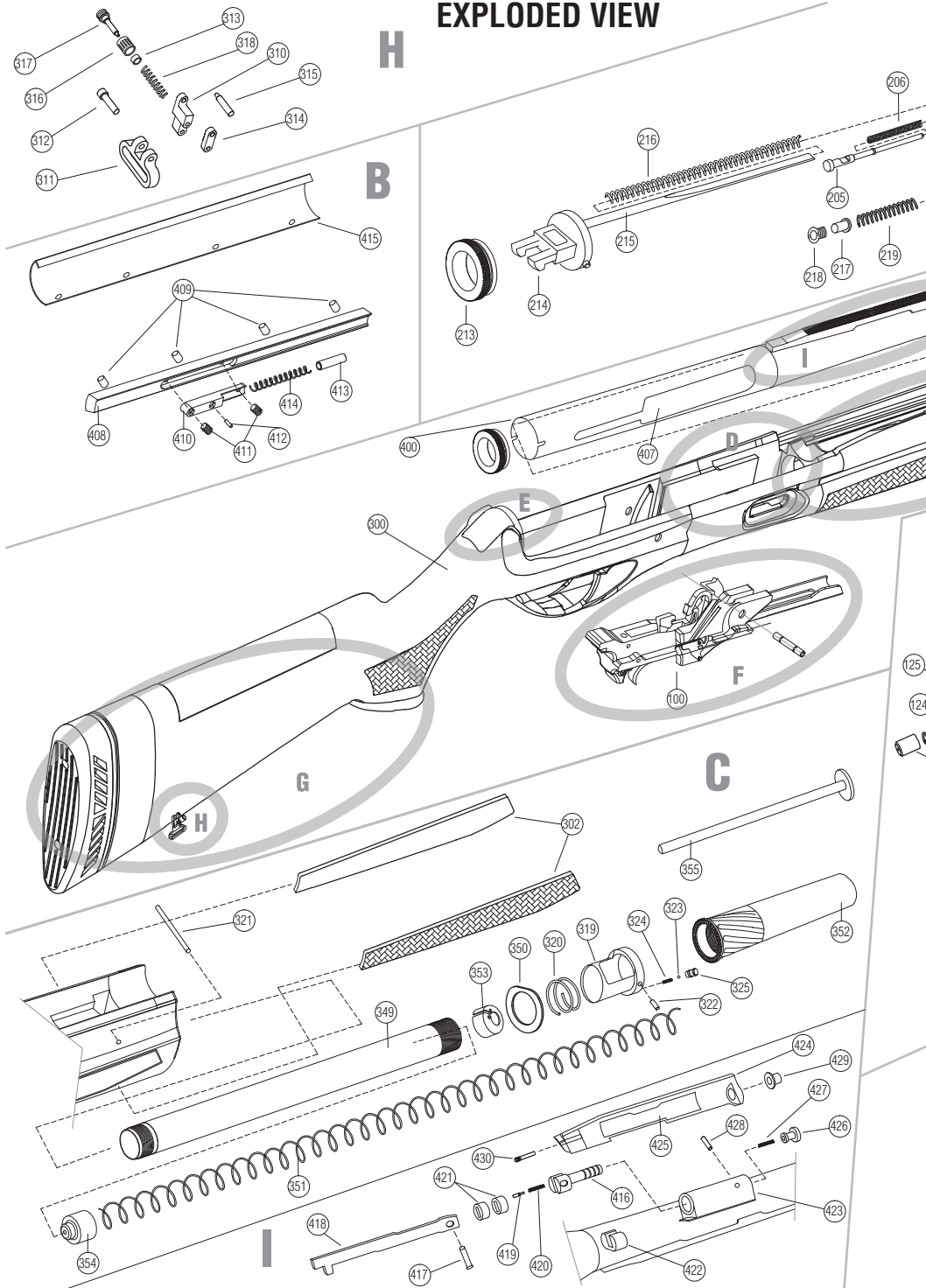
NOMENCLATURE

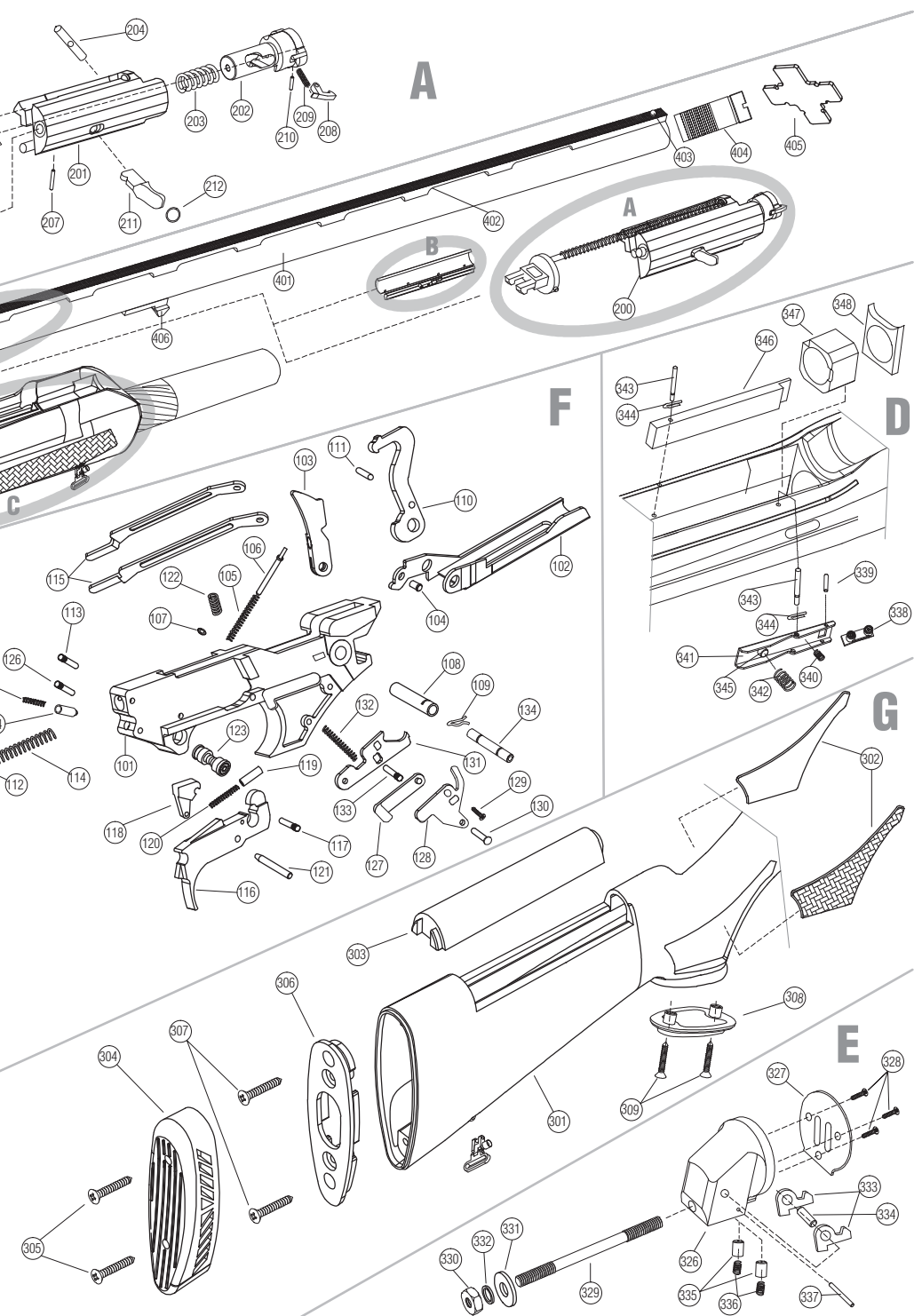


PARTS LIST

CODE	PART NOMENCLATURE	PART CODE	CODE	PART NOMENCLATURE	PART CODE
100	TRIGGER GROUP (COMPLETE)	33100	321	STOCK BUSHING CONNECTING PIN	33321
101	TRIGGER GUIDE	33101	322	STOCK BUSHING STOP PIN	33322
102	CARRIER	33102	323	STOCK BUSHING BALL	33323
103	CARRIER LEVEL	33103	324	STOCK BUSHING BALL SPRING	33324
104	CARRIER LEVEL RIVET	33104	325	STOCK BUSHING BALL GUIDE	33325
105	CARRIER LEVEL SPRING	33105	326	STOCK CONNECTION PLUG	33326
106	CARRIER LEVEL PIN	33106	327	STOCK CONNECTION PLUG PLATE	33327
107	CARRIER LEVEL PIN WASHER	33107	328	STOCK CONNECTION PLUG PLATE SCREWS(X3)	33328
108	CARRIER PIN	33108	329	STOCK CONNECTION ROD	33329
109	CARRIER PIN RETAINING PLUG	33109	330	STOCK CONNECTION ROD NUT	33330
110	HAMMER	33110	331	STOCK CONNECTION ROD WASHER	33331
111	HAMMER PIN	33111	332	STOCK CONNECTION ROD SPRING WASHER	33332
112	HAMMER SPRING GUIDE	33112	333	STOCK CONNECTION PLUG SUPPORT	33333
113	HAMMER SPRING GUIDE STOP PIN	33113	334	STOCK CONNECTION PLUG SUPPORT PIN	33334
114	HAMMER SPRING	33114	335	STOCK CONNECTION PLUG SUPPORT PUSHING PIN	33335
115	HAMMER PLATE	33115	336	STOCK CONNECTION PLUG SUPPORT PUSHING PIN SPRING	33336
116	TRIGGER	33116	337	STOCK CON. PLUG SUP. PUSH. PIN SPR. RETAINING PIN	33337
117	TRIGGER STOP PIN	33117	338	CARRIER LATCH BUTTON	33338
118	SEAR	33118	339	CARRIER LATCH BUTTON PIN	33339
119	SEAR PIN	33119	340	CARRIER LATCH BUTTON SPRING	33340
120	SEAR SPRING	33120	341	CARRIER LATCH	33341
121	TRIGGER PIN	33121	342	CARRIER LATCH SPRING	33342
122	TRIGGER SPRING	33122	343	CARRIER LATCH PIN	33343
123	SAFETY BUTTON	33123	344	CARRIER LATCH RETAINING PLUG	33344
124	SAFETY SPRING GUIDE	33124	345	CARRIER LATCH RIVET	33345
125	SAFETY SPRING	33125	346	CARTRIDGE ROUTER	33346
126	SAFETY PIN	33126	347	MAGAZINE TUBE CONNECTION NUT	33347
127	CARTIDGE DROP LEVER	33127	348	MAGAZINE TUBE PLUNGER	33348
128	CARTRIDGE DROP LEVER STOP	33128	349	MAGAZINE TUBE	33349
129	CARTRIDGE DROP LEVER STOP SCREW	33129	350	MAGAZINE TUBE WASHER	33350
130	CARTRIDGE DROP LEVER STOP PIN	33130	351	MAGAZINE SPRING	33351
131	CARRIER DROP LEVER	33131	352	MAGAZINE CAP	33352
132	CARRIER DROP LEVER SPRING	33132	353	MAGAZINE SPRING RETAINING PLUG	33353
133	CARRIER DROP LEVER PIN	33133	354	MAGAZINE SPRING FOLLOWER	33354
134	TRIGGER GROUP PIN	33134	355	MAGAZINE PLUG	33355
200	BOLT (COMPLETE)	33200	400	BARREL+ RECEIVER ASSEMBLY	33400
201	BOLT	33201	401	BARREL	33401
202	LOCKING HEAD	33202	402	VENTILATED RIB	33402
203	INERTIA SPRING	33203	403	METAL BEAD FRONT SIGHT	33403
204	LOCKING HEAD PIN	33204	404	INNER CHOKE	33404
205	FIRING PIN	33205	405	CHOKE WRENCH	33405
206	FIRING PIN SPRING	33206	406	BARREL LOCKING BLOCK	33406
207	FIRING PIN STOP	33207	407	RECEIVER	33407
208	EXTRACTOR	33208	408	RECEIVER TANG BEARING	33408
209	EXTRACTOR SPRING	33209	409	RECEIVER TANG BEARING RIVET	33409
210	EXTRACTOR PIN	33210	410	RECEIVER TANG GUIDE	33410
211	COCKING HANDLE	33211	411	RECEIVER TANG SCREW	33411
212	COCKING HANDLE O-RING	33212	412	RECEIVER TANG RIVET	33412
213	RECEIVER NUT	33213	413	RECEIVER TANG PIN	33413
214	RECEIVER LOCK	33214	414	RECEIVER TANG SPRING	33414
215	RECOIL SPINDLE	33215	415	RECEIVER TANG	33415
216	RECOIL SPRING	33216	416	PISTON	33416
217	BOLT STOP PIN	33217	417	PISTON PIN	33417
218	BOLT STOP PIN NUT	33218	418	ACTION BAR	33418
219	BOLT STOP PIN SPRING	33219	419	ACTION BAR PIN	33419
300	STOCK (COMPLETE)	33300	420	ACTION BAR PIN SPRING	33420
301	STOCK	33301	421	ACTION BAR BUSHING	33421
302	STOCK INLAYS	33302	422	ACTION BAR GUIDE	33422
303	CHEEKPIECE	33303	423	GAS CYLINDER	33423
304	BUTT PLATE	33304	424	GAS CYLINDER COVER	33424
305	BUTT PLATE SCREW	33305	425	GAS CYLINDER HEAT SHIELD	33425
306	BUTT PLATE CONNECTING PLASTIC	33306	426	GAS CYLINDER COVER PIN	33426
307	BUTT PLATE INNER SCREW	33307	427	GAS CYLINDER COVER PIN SPRING	33427
308	GRIP CAP	33308	428	GAS CYLINDER COVER PIN RETAINING PIN	33428
309	GRIP CAP SCREW	33309	429	GAS CYLINDER COVER PIN BUSHING	33429
310	SWIVEL BODY	33310	430	GAS CYLINDER COVER SCREW	33430
311	SWIVEL RING	33311	501	MAGAZINE TUBE CONNECTION NUT	33501
312	SWIVEL RING RIVET	33312	502	MAGAZINE TUBE	33502
313	SWIVEL LOCK BUSHING	33313	503	MAGAZINE TUBE ABSORBER PLASTIC	33503
314	SWIVEL LOCK	33314	504	MAGAZINE TUBE WASHER	33504
315	SWIVEL LOCK PIN	33315	505	MAGAZINE SPRING	33505
316	SWIVEL LOCK NUT	33316	506	FOR-END CAP	33506
317	SWIVEL LOCK NUT PIN	33317	507	MAGAZINE SPRING RETAINING PLUG	33507
318	SWIVEL LOCK NUT SPRING	33318	508	MAGAZINE SPRING FOLLOWER	33508
319	STOCK BUSHING	33319	509	MAGAZINE PLUG	33509
320	STOCK BUSHING SPRING	33320			

EXPLODED VIEW





TECHNICAL FEATURES AND DATA

Fill in the blanks below according to your shotgun:

Model	Serial No	Barrel Length	Chamber	Caliber	Type
.....	Semi-Auto Inertia&Gas-Driven Shotgun

- Alternatives in Chamber sizes: 76 mm (3 inches)
- Alternatives in caliber values: 12 Caliber
- Alternatives in Barrel Length:
 - 46cm (18")
 - 51cm (20")
 - 56cm (22")
 - 61cm (24")
 - 66cm (26")
 - 71cm (28")
 - 76cm (30")

Synthetic parts are made of advanced polymer composites, wooden stocks are made of kiln dried and moisture stabilized Turkish walnut.

EXTERNAL CONTROL PARTS

("Left" and "Right" refer to the left and the right sides of the shotgun respectively, seen by a shooter holding the shotgun in a firing position).

("Front" refers to the Barrel-side of the shotgun and "Back" refers to the stock -side of the shotgun).

Cross Button Safety:

- It is a round button located at the rear of the trigger guard, on the trigger housing.
- The safety button is disengaged when the red ring on its left side is exposed. In this position the shotgun is ready to fire. **(1)**
- To engage the safety button, push it fully to the right as far as it goes until its red ring is completely covered. The safety is now **"ON"**, blocking the trigger from being pulled. **(2)**
- To take the safety **"OFF"** push the button fully to the left, exposing its red ring. The trigger can now be pulled.

WARNING!

1. Always keep the cross button safety **"ON"** until you point the muzzle at a target and ready to fire.
2. Before you attempt to load your shotgun make sure you understand all operating principles of the external control parts.
3. Keep the muzzle pointed in a safe direction and your fingers off the trigger when operating the safety. Although malfunctions which may cause a shotgun to fire despite the safety being engaged are rare, they still can happen. Even if an accidental firing should occur, nobody will be hurt if you follow this rule.

THREE THINGS TO REMEMBER ABOUT SAFETIES:

1. **NEVER TOTALLY DEPEND ON A MECHANICAL SAFETY.** Like all mechanical devices the safety is subject to breakage or malfunction and can be defeated by wear, abuse, dirt, corrosion, incorrect assembly of the shotgun, improper adjustment or repair, or lack of maintenance.
2. **NO MECHANICAL SAFETY IS "CHILDPROOF" OR "FOOLPROOF".** No safety ever invented can be relied upon to prevent an accidental shooting by a determined child or a grown up idiot "playing" with a shotgun.
3. **TREAT EVERY SHOTGUN AS IF YOU EXPECT ITS MECHANICAL SAFETY NOT TO WORK.** You will be astounded at how cautious you become, and how little tolerance you will have for the complacency of others.

CARRIER LATCH BUTTON:

It is located on the right side, below the ejection port. When the bolt is rearward, pressing this button lets go off the bolt and locks it at the front of the receiver. Also, this button is used to release the carrier when the shotgun is not cocked.

WARNING!

The carrier latch button has two sections. While the front section of this button is used to hold the shotshells, the rear section is used to empty the shotshells from the magazine. Be extremely careful, when the shotgun is cocked pressing the rear section of this button will feed several cartridges into the receiver.

CARTRIDGE DROP LEVER: It is a button located on the front section of the trigger guard. When pressed, this button unlocks the carrier, providing a cartridge drop from the magazine onto the carrier. (5)

CARRIER: It is located in front of the trigger guard inside the loading gate under the receiver. When the shotgun is uncocked, Carrier can be released simply by pressing the carrier latch button. Once the carrier is released shotshells can easily be loaded into the magazine tube. Loading this way will require you to press latch button for each cartridge. (3)

TRIGGER: Trigger is located inside the trigger guard. With the safety OFF and a cartridge in the chamber, pulling the trigger will fire the shotgun.

BOLT COCKING HANDLE: Cocking Handle is located on the right side of the shotgun, protruding from the bolt. It is used for retracting the bolt. (4)

FOREND CAP: It is located at the end of the magazine tube under the barrel. Screw (clockwise) this cap onto the magazine tube to securely and properly fasten the barrel.

ASSEMBLY INSTRUCTIONS

Your newly obtained Escort Dynamax inertia&gas-driven semi-automatic shotgun is packed dismantled and consists of "Barrel-Receiver" and "Stock-Forend" subassemblies. Before you proceed with the assembly procedure, remove all parts from nylon bags. Then see the sections entitled as "Nomenclature" and "Safety Measures" in this manual. (6)

WARNING!

Before you assemble the barrel make sure the bore of the barrel is clean and free of obstructions. Also look through the loading gate to be certain that the magazine and the receiver are also empty. All the assembly procedures must be performed on an empty shotgun.

Assemble the barrel as follows:

- Unscrew(counter-clockwise) and loosen the fore-end cap (You don't have to remove it). (7)
- Set the Safety to "ON" position. (2)
- Your shotgun is packed with the hammer cocked. If not, pull the hammer backwards to cock it, otherwise you won't be able to assemble your shotgun.
- Make sure the Piston assembly is in place. Before inserting the piston pull the action bar bushing to the rear. Hold the piston assembly with the action bar pointing towards the receiver and the piston towards the gas cylinder. Insert the piston into the gas cylinder, push the action bar bushings forward and make sure the action bar goes through the action bar guide. (8)
- Make sure the gas cylinder cover is in place. Pin Bushing on the front of the cover must be seated onto the pin located on the gas cylinder. (9) Push the cover rearwards locking the pin on the rear of the cover to the catch point located on the action bar guide. Then push the cover slightly forwards. (10)
- Insert the hooks at the rear of the barrel-receiver assembly into the sockets on the stock (11). Then push the barrel until it seats properly in place. Screw(clock-wise) the forend-cap tightly onto the magazine tube. (12) Make sure the barrel is firmly placed and fastened on the fore-end.
- Lock the bolt open by pulling the cocking handle towards the rear of the receiver. (13)
- Let go off the bolt by pressing the carrier latch button. (14)
- Pull the trigger to lower the hammer (Always point your shotgun in a safe direction before lowering the hammer).

WARNING!

During the assembly:

- Make sure the hooks at the rear of the Barrel-Receiver assembly are inserted correctly.
- Make sure the gas cylinder cover and piston assembly are firmly in place.
- Make sure the Barrel-Receiver assembly is firmly in place after you tighten the forend-cap.

- Make sure the forend cap is screwed tightly on the magazine tube. Pull the barrel to check if it's tightened securely.
- Make sure all parts are properly placed during and after the assembly procedures.

WARNING!

If;

1. The Barrel is not firmly in place,
2. Bolt does not slide forward,

Your shotgun is not assembled properly. In such a case reverse the assembly procedures and try to re-assemble your shotgun. If you still can not assemble your shotgun, put the safety on SAFE and take it to a qualified gunsmith for help.

LOADING

WARNING!

- Keep your fingers away from the trigger if you don't intend to shoot.
- Always check the cartridge chamber, magazine tube and the receiver to be certain that the shotgun is not already loaded.
- Always keep your firearm pointed in a safe direction while loading.
- Always use the correct ammo size that matches your shotgun.

Load the shotgun as follows:

- Point the barrel of your shotgun in a safe direction!
- Retract the bolt by pulling the cocking handle until it locks at the rear. **(13)**
- Engage the safety to "ON" position.
- Place one cartridge into the chamber through the ejection port.
- Press the carrier latch button keeping your fingers away from the path of the bolt. The bolt will quickly slide forward and close on the loaded chamber. **(14)**
- Turn the shotgun upside down so as you can see the carrier. Insert up to 4 cartridges into the magazine tube. If the magazine plug is assembled this number will be reduced to 2.

WARNING!

Your shotgun is now loaded and ready to fire.

USE OF THE "MIGRATORY MAGAZINE PLUG":

When assembled, the magazine plug reduces the capacity of the shotgun from 4+1 to 2+1 for safety reasons or for the regulations varying from country to country.

PS: Migratory magazine plug is optional. Consult your dealer about your country's laws regarding use of the magazine plug.

It is recommended to have your migratory magazine plug assembled by a qualified gunsmith.

Assemble the migratory plug as follows:

- Engage the safety in **ON** position and make sure the shotgun is empty. If not, unload it (see unloading section).
- Unscrew(counterclockwise) and remove the forend cap. **(7)**
- Separate the Barrel-Receiver assembly from the stock. **(15)**
- Pull the Magazine Spring Retaining Plug using long nose pliers. Since this plug is under tension, carefully hold the plug to prevent it from springing out while pulling. **(16)**
- Insert the magazine plug into the center of the magazine spring. **(17)**
- Place the Magazine Spring Retaining Plug onto the top of the magazine plug. Squeeze the magazine spring into the magazine tube with one hand, while pushing the Retaining Plug down into the magazine tube with the pliers in your other hand at the same time. Keep pushing until the Magazine Spring Retaining Plug locks in place. **(18)**
- Screw the forend cap onto the magazine tube tightly. **(12)**

PS: Reverse the above procedures to uninstall the magazine plug.

WARNING!

Be extremely careful during the assembly or disassembly procedures of the magazine spring, magazine spring retaining plug and the migratory magazine plug. These parts are under compression from the spring. Always wear an eye protection to avoid serious injury during the assembly and disassembly procedures. Always point your shotgun in a safe direction to avoid personal injury in case of any accident.

FIRING

WARNING!

Since the bolt moves back and forth with a considerable velocity, keep hands, clothings and other objects away from the bolt and the cocking handle. Keep your fingers outside the trigger guard until you aim at a target and ready to fire. The bolt remains locked open after the last cartridge is fired. But never rely on this. Always visually check the chamber and the magazine to be certain that the shotgun is empty. Like all other semi-auto shotguns your Escort Dynamax inertia&gas-driven semi-auto shotgun is fed automatically with a cartridge into the chamber after each shot. Since this operation needs nothing but the pulling of the trigger, your shotgun is ready to fire after each shot.

Fire from your shotgun as follows;

- Wear eye and hearing protection.
- Engage the safety and load your shotgun. (See Loading section)
- Point your muzzle towards intended target.
- Disengage the safety and aim at your target.
- Pull the trigger.

WARNING!

When shooting, make sure you seat your shotgun against your shoulder.

It is not uncommon while loading or firing any semi-auto shotgun to experience a malfunction in which an unfired cartridge or a fired cartridge case becomes jammed between the bolt and the chamber. Clear such a stoppage as follows:

Point the muzzle in a safe direction, pull back the bolt and lock it to the rear. The jammed cartridge or case can then be removed by shaking it out or picking it out with you fingers.

WARNING!

- If your shotgun fails to fire after pulling the trigger, follow the instructions below:
 1. Point your shotgun in a safe direction.
 2. Disengage the safety if it is engaged. Your Inertia shotgun can not be cocked with an engaged safety if the hammer is lowered without firing.
 3. Do not change the direction of the muzzle for at least 30 seconds(you could be having a hang-fire, and the cartridge could go off when you do not expect it).
 4. Eject the cartridge from the chamber by retracting the bolt. First, examine the ejected cartridge. If it has been deeply indented by the firing pin, the cartridge is defective. If it has been indented lightly or not at all, rechamber the cartridge and try again.
 5. If your shotgun still fails to fire, handle with care and take it immediately to a gunsmith.
- While shooting, if you notice that the sound of a cartridge is considerably louder or softer than that of the previous one, stop shooting and do not load the shotgun anymore. In such a case follow the steps below:
 6. Point your shotgun in a safe direction.
 7. Engage the safety.
 8. Unload your shotgun completely. (See the Unloading Section)
 9. After removing the rounds, visually check the barrel for any obstruction. If you notice any malfunction, immediately take your shotgun to a gunsmith.

USE OF CHOKES

Chokes are the tubes which are screwed into the barrel end to narrow the barrel’s bore at the muzzle thereby focusing the shot range into a tighter stream. There are 2 different choke systems used in escort inertia-driven shotguns:

1. Screw-in (inner) chokes
2. Fixed Cylinder Bore Chokes

Choice of a proper choke depends on the barrel’s length:

Choke	Barrel Length (inch / cm)						
Inner choke				24 / 61	26 / 66	28 / 71	30 / 76
Fixed Cylinder Bore	18 / 46	20 / 51	22 / 56	24 / 61			

Chokes are packed in accordance with the barrel length.

WARNING!

Use only the chokes suitable to your shotgun’s barrel length.

1. Screw-in(inner) Chokes:

There are 5 different inner chokes available. **(19)**

- F(Full /).
- IM (Improved Modified /).
- M (Modified ///).
- IC (Improved Cylinder ////).
- Cyl-Skeet (Cylinder Skeet /////).

Your shotgun is packed with either 3 or 5 choke systems. The most common choke system is 3-choke system which are F, IM and IC chokes.However different combinations of 3 choke system are also possible depending on your contry’s requirements.

5-Choke system contains F, IM, M, IC ve Cyl-Skeet chokes. All screw-in (inner) chokes have one, two, three, four or five notches, which indicate the type of the screw-in choke, i.e. F choke has one, IM has two, M has three, IC has four and Cyl-Skeet has five notches. Please also check the markings on chokes.

PS: All inner chokes are suitable for lead or steel shots.

Choke	Muzzle Constriction (12 Gauge)	Pattern Percentage
Cylinder / Skeet	0-0,12 mm	40% - 53%
Improved Cylinder	0.25 mm	57%
Modified	0.50 mm	67%
Improved Modified	0.75 mm	73%
Ful	1.00 mm	75%

Table above demonstrates the muzzle constriction & pattern percentage for different types of inner chokes. The results are taken from the shots performed at a distance of 36,5 meters. The pattern percentage shows the percentage of pellets striking within a 76mm (30inch) circle in diameter. As we can see from the table, the Full chokes provide the best accuracy. The accuracy decreases from Full to Cyl-Skeet inner chokes which has the least accuracy. Expansion of the shot pellets within a distance is the least in Full inner chokes whereas Cyl-skeet chokes show the most expansion.

Installation and de-installation of inner Chokes:

- Choose one of the chokes provided with your shotgun and insert it into the barrel. Screw this choke clockwise with a choke wrench all the way in. Make sure it is completely tightened. **(20)**
- To remove the choke unscrew(counter-clockwise) it with a choke wrench and pick it out from the barrel.

2. Fixed Cylinder Bore Chokes:

Fixed Cylinder Bore Choke means the choke constriction is pre-machined into the barrel at the factory. No choke adjustments can be made and no interchangeable chokes can be put.

UNLOADING

WARNING!

Make sure the safety is ON and your fingers off the trigger.

Unload your shotgun as follows:

- Point your shotgun in a safe direction and engage the safety. (2)
- Retract the bolt by pulling the cocking handle rearwards to eject the live round from your shotgun. (21)
- Keeping your fingers away from the path of the bolt and the ejection port, press the carrier latch button to lock the bolt at the front. (14)
- To empty the magazine tube, with the bolt locked closed on the chamber, push the carrier inwards with your right index finger. Using your left index finger, hold the bottom of the shotshell in the magazine. Then with your right thumb finger press the rear section of the carrier latch button to release and remove the shotshell. Repeat this for each shotshell until the magazine becomes empty. (22)

Or;

- Lock the bolt at the front (to close the bolt press the carrier latch button). Engage the safety. If there is an unfired shotshell in the chamber, eject it by retracting the bolt cocking handle. Press the cartridge drop lever to drop a cartridge from the magazine tube. Pull and let go of the cocking handle to feed this cartridge into the chamber. Retract the cocking handle again to eject the cartridge from your shotgun. Repeat this process for each cartridge until the magazine becomes empty.
- Visually check the magazine tube and the chamber to be certain that the shotgun is completely unloaded.
- Disengage the safety and press the trigger keeping your shotgun pointed in a safe direction.

DISSASSEMBLY INSTRUCTIONS

WARNING!

Before you disassemble your shotgun make sure it is completely unloaded and the safety button is on SAFE.

Disassemble your shotgun as follows:

- Keeping the bolt locked closed, unscrew and loosen the forend cap. (7)
- Separate the barrel-receiver assembly from the stock by pulling apart from each other. (15)

WARNING!

If you feel you need to disassemble your shotgun right after you have fired, be aware that the exterior metal parts of the firearm might have become very hot and can cause severe burns if touched.

- Release the pin on the rear of the cover from the catch point by pushing the cylinder cover rearwards. Then take the cover off the barrel. (23)
- Pull the piston assembly rearwards. Pull the action bar bushing rearwards and raise the action bar upwards simultaneously. Remove the piston from gas cylinder and detach the piston assembly completely. (24)
- Remove the receiver nut rotating it counter-clockwise. (25)
- Remove the recoil group from the receiver by pulling the hooks located at the end of the recoil group. (26)
- After aligning the cocking handle with the notch on the receiver, detach the cocking handle from the bolt. (27)
- Remove the bolt from the receiver. (28)
- To remove the trigger plate from the stock, tap out the trigger plate pin. (29)
- Then press the cartridge drop lever and take the trigger plate off the stock by pulling it towards the carrier. (30)
- Follow the steps below to disassemble the bolt:
 1. While tapping the firing pin stop out, hold the firing pin to prevent it from springing out. (31)
 2. Remove the firing pin and the firing pin spring together. (32)
 3. Turn the bolt upside down and remove the locking head pin by shaking it out. (33)
 4. Remove the locking head from the bolt. (34)
 5. Remove the locking head spring from the bolt. (35)

The trigger plate can only be dismounted when the barrel-receiver assembly is separated from the stock.

PS: To re-assemble your shotgun reverse the above procedures.

WARNING!

1. Before assembling the bolt, make sure the locking head is inserted correctly, i.e the extractor(on the locking head) must be on the right side of the bolt and seen from the ejection port when the bolt is in the receiver.(34)
2. When inserting the bolt into the receiver, point the muzzle downwards and make sure the bolt is correctly oriented, i.e. the bolt must slide with its groove over the rail inside the receiver. At the same time you will see the hole(where the cocking handle fits) moving along the path of the cocking handle on the receiver.(28)
3. When placing the barrel-receiver component onto the stock, make sure the forend cap is loose enough. Loosen the forend cap a bit more if it prevents fitting of the barrel into the forend.

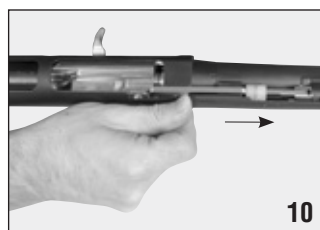
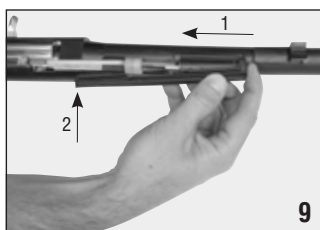
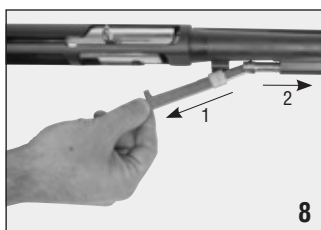
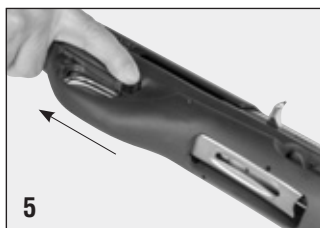
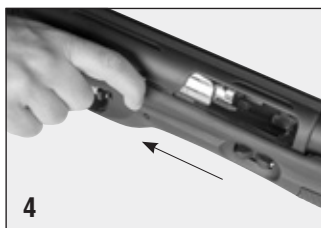
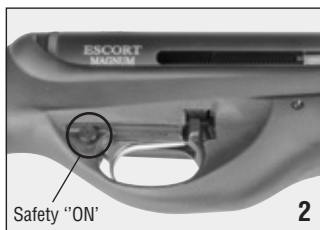
CARE, CLEANING AND LUBRICATION

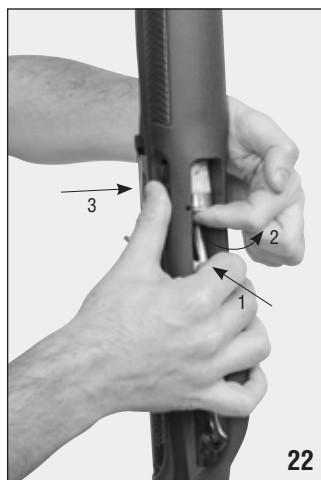
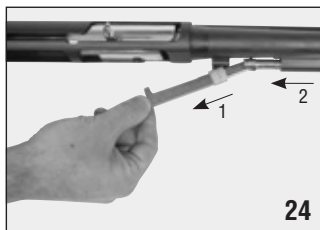
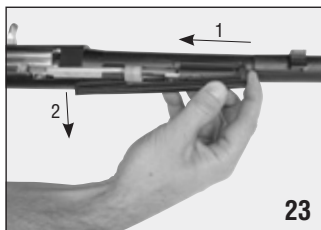
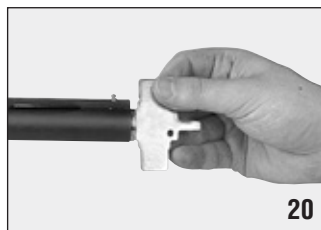
WARNING!

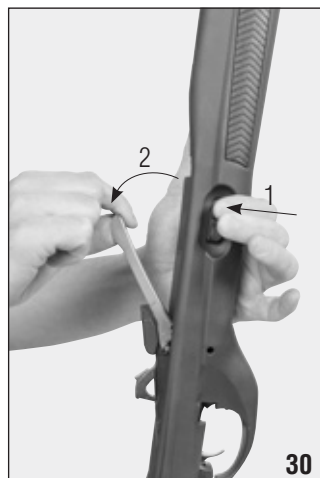
Before cleaning or lubricating the shotgun make sure it is unloaded and the safety is “ON”. It is recommended to disassemble the shotgun to clean and to lubricate it when grease, dirt particles and combustion residues accumulate. To have the best resistance against corrosion, it is necessary to clean and lubricate the shotgun after each use, especially after use in wet and saline environment.

Materials and equipment necessary for cleaning and lubrication;

- Cleaning rod
- Cotton bore patches
- Brass bore brush
- Small soft brush
- Powder solvent
- Good quality shotgun oil
- After use, to remove any powder and lead residue in the bore, scrub the barrel and chamber using the bore brush with powder solvent. Then do not forget to swab the bore and the chamber with shotgun oiled cotton patches to protect from rust and corrosion.
- At the end of the hunting season or after a high number of shots (about 500 shots), disassemble the bolt assembly and clean it with a soft brush and shotgun oil. Then dry it carefully with a soft cloth and oil the parts lightly.
- If you go shooting everyday, perform the daily maintenance of your shotgun.
- At the end of a hunting season or after performing 250 shots, disassemble the bolt and remove the locking head, then clean these parts separately using a soft brush and shotgun oil. After drying with a soft cloth, lightly lubricate each one of these parts.
- After removing the bolt clean the inner surface of the receiver using a soft brush and a shotgun oil.
- Apply the same maintenance procedures during the assembly of the trigger group and piston assembly.
- Remove the combustion residues and grease from the bore and the chamber using powder solvents and a soft brush.
- Before putting the shotgun away, swab all the external surfaces with a protective lubricant.







This image shows a single sheet of white paper with horizontal ruling lines. The lines are evenly spaced and run across the width of the page. There are no margins, text, or other markings on the paper.

This image shows a single sheet of white paper with horizontal ruling lines. The lines are evenly spaced and run across the width of the page. There are no margins, text, or other markings on the paper.



Serious. Solid. Impact.

HATSAN

ARMS COMPANY

Kemalpasa O.S.B. Mah. Ansizca Sanayi Sitesi No: 303 Ic Kapi No: 1, 35170

Kemalpasa - Izmir - TURKEY

Tel: +90 (232) 878 91 00 • Fax: +90 (232) 878 91 02

www.hatsan.com.tr info@hatsan.com.tr